

ORIGINAL ARTICLE

Association of Nut Consumption with Total and Cause-Specific Mortality

Ying Bao, M.D., Sc.D., Jiali Han, Ph.D., Frank B. Hu, M.D., Ph.D., Edward L. Giovannucci, M.D., Sc.D., Meir J. Stampfer, M.D., Dr.P.H., Walter C. Willett, M.D., Dr.P.H., and Charles S. Fuchs, M.D., M.P.H.

ABSTRACT

BACKGROUND

Increased nut consumption has been associated with a reduced risk of major chronic diseases, including cardiovascular disease and type 2 diabetes mellitus. However, the association between nut consumption and mortality remains unclear.

METHODS

We examined the association between nut consumption and subsequent total and cause-specific mortality among 76,464 women in the Nurses' Health Study (1980–2010) and 42,498 men in the Health Professionals Follow-up Study (1986–2010). Participants with a history of cancer, heart disease, or stroke were excluded. Nut consumption was assessed at baseline and updated every 2 to 4 years.

RESULTS

During 3,038,853 person-years of follow-up, 16,200 women and 11,229 men died. Nut consumption was inversely associated with total mortality among both women and men, after adjustment for other known or suspected risk factors. The pooled multivariate hazard ratios for death among participants who ate nuts, as compared with those who did not, were 0.93 (95% confidence interval [CI], 0.90 to 0.96) for the consumption of nuts less than once per week, 0.89 (95% CI, 0.86 to 0.93) for once per week, 0.87 (95% CI, 0.83 to 0.90) for two to four times per week, 0.85 (95% CI, 0.79 to 0.91) for five or six times per week, and 0.80 (95% CI, 0.73 to 0.86) for seven or more times per week ($P < 0.001$ for trend). Significant inverse associations were also observed between nut consumption and deaths due to cancer, heart disease, and respiratory disease.

CONCLUSIONS

In two large, independent cohorts of nurses and other health professionals, the frequency of nut consumption was inversely associated with total and cause-specific mortality, independently of other predictors of death. (Funded by the National Institutes of Health and the International Tree Nut Council Nutrition Research and Education Foundation.)

From the Channing Division of Network Medicine, Department of Medicine, Brigham and Women's Hospital and Harvard Medical School (Y.B., F.B.H., E.L.G., M.J.S., W.C.W., C.S.F.), the Departments of Epidemiology (F.B.H., E.L.G., M.J.S., W.C.W.) and Nutrition (F.B.H., E.L.G., M.J.S., W.C.W.), Harvard School of Public Health, and the Department of Medical Oncology, Dana-Farber Cancer Institute (C.S.F.) — all in Boston; and the Department of Epidemiology, Richard M. Fairbanks School of Public Health, and Melvin and Bren Simon Cancer Center, Indiana University, Indianapolis (J.H.). Address reprint requests to Dr. Bao at the Channing Division of Network Medicine, Department of Medicine, Brigham and Women's Hospital and Harvard Medical School, 181 Longwood Ave., Boston, MA 02115, or at ying.bao@channing.harvard.edu.

N Engl J Med 2013;369:2001-11.

DOI: 10.1056/NEJMoa1307352

Copyright © 2013 Massachusetts Medical Society.

NUTS ARE NUTRIENT-DENSE FOODS THAT are rich in unsaturated fatty acids, fiber, vitamins, minerals, and many other bioactive substances, such as phenolic antioxidants and phytosterols.^{1,2} Observational studies and clinical trials have suggested that nut consumption has beneficial effects on coronary heart disease¹ and its intermediate biomarkers (e.g., blood cholesterol).³ On the basis of these findings, the Food and Drug Administration concluded in 2003 that for most nuts, consumption of 43 g (1.5 oz) per day, as part of a low-fat diet, “may reduce the risk of heart disease.”⁴ More recently, a randomized primary-prevention trial involving persons at high cardiovascular risk showed a significant reduction in major cardiovascular events among participants assigned to a Mediterranean diet — one component of which was supplementation with walnuts, hazelnuts, or almonds — as compared with a control diet.⁵

Observational and intervention studies of nut consumption have also shown reductions in various mediators of chronic diseases, including oxidative stress,^{6,7} inflammation,⁸ visceral adiposity,⁹ hyperglycemia,^{6,9,10} insulin resistance,^{11,12} and endothelial dysfunction.¹³ In prospective cohort studies, increased nut intake has been associated with reduced risks of type 2 diabetes mellitus,¹⁴⁻¹⁶ the metabolic syndrome,¹⁷ colon cancer,¹⁸ hypertension,¹⁹ gallstone disease,^{20,21} diverticulitis,²² and death from inflammatory diseases.²³

Despite these inverse associations between nut intake and several major chronic diseases, few studies have investigated nut consumption in relation to total mortality, and these investigations have often been limited by small samples, single assessment of diet and other covariates, or inadequate adjustment for important confounding factors.²⁴⁻³¹ We therefore examined the association of nut consumption with total and cause-specific mortality in two large, independent cohort studies of nurses and other health professionals. These studies provide repeated measures of diet (including separate data on peanuts and tree nuts), extensive data on known or suspected confounding variables, 30 years of follow-up, and data on more than 27,000 deaths for analysis.

METHODS

STUDY POPULATION

The Nurses' Health Study (NHS) is a prospective cohort study of 121,700 female nurses from 11

U.S. states; participants were enrolled in 1976. The Health Professionals Follow-up Study (HPFS) is a prospective cohort study of 51,529 male health professionals from all 50 states, enrolled in 1986. Follow-up questionnaires are sent biennially to update medical and lifestyle information. Follow-up rates exceed 90% in each 2-year cycle for both cohorts.

For this analysis, we defined baseline as the year of the first validated food-frequency questionnaire in each study — 1980 for the NHS and 1986 for the HPFS. At baseline, 92,468 women in the NHS and 49,934 men in the HPFS completed the dietary questionnaire. We excluded 5611 women and 5939 men with a history of cancer, heart disease, or stroke; 1113 women and 340 men who did not provide information on nut intake; and 9280 women and 1157 men who did not provide information on anthropometric measures or physical activity. The final analyses included 76,464 women in the NHS and 42,498 men in the HPFS.

The authors assume full responsibility for the analyses and interpretation of the data in this study. The funders of the study had no role in its design or conduct; in the collection, management, analysis, or interpretation of the data; or in the preparation, review, or approval of the manuscript. The study was approved by the human subjects committees at Brigham and Women's Hospital and Harvard School of Public Health, and all participants provided written informed consent. In addition, the study was approved by the Connecticut Department of Public Health Human Investigations Committee, and some data used in the study were obtained from the Connecticut Department of Public Health.

DIETARY ASSESSMENT

Dietary intake was measured with the use of validated food-frequency questionnaires administered every 2 to 4 years. In the 1980 and 1984 dietary questionnaires, we asked the participants how often they had consumed a serving of nuts (serving size, 28 g [1 oz]) during the preceding year: never or almost never, one to three times a month, once a week, two to four times a week, five or six times a week, once a day, two or three times a day, four to six times a day, or more than six times a day. In the subsequent dietary questionnaires, the question regarding nuts was split into two items: peanuts and other nuts. Total nut consumption was defined as the intake of pea-



A Quick Take animation is available at NEJM.org

nuts and other nuts. A validation study of the food-frequency questionnaire indicated that nut intake was reported reasonably accurately; the correlation coefficient was 0.75 for the correlation between intake assessed on the baseline dietary questionnaire and intake assessed on four 1-week dietary records.³²

ASCERTAINMENT OF DEATHS

Our primary end point was death from any cause. We performed systematic searches of the vital records of states and of the National Death Index. This search was supplemented by reports from family members and postal authorities. With the use of these methods, we were able to ascertain more than 98% of the deaths in each cohort.³³

A physician who was unaware of the data on nut consumption and other risk factors reviewed death certificates and medical records to classify the cause of death according to the eighth and ninth revisions of the *International Classification of Diseases*. Deaths were grouped into nine major categories (Table S1 in the Supplementary Appendix, available with the full text of this article at NEJM.org).

STATISTICAL ANALYSIS

To better represent long-term diet and to minimize any effects of within-person variation, we calculated the cumulative average of nut consumption. Because participants may alter dietary patterns after the diagnosis of a major illness, we suspended further updating of all dietary variables when participants reported a diagnosis of stroke, heart disease, angina, or cancer, although follow-up continued until death or the end of the study period.

We used Cox proportional-hazards models to estimate hazard ratios and 95% confidence intervals. Multivariate models were adjusted for known or suspected predictors of death. P values for trend were calculated with the use of the Wald test of a score variable based on the median number of servings of nuts consumed per day for each category of nut consumption. We also used restricted-cubic-spline regression to flexibly model the association.

We conducted several sensitivity analyses to test the robustness of the results. To minimize the influence of smoking or an extremely low or high body-mass index (BMI; the weight in kilograms divided by the square of the height in meters) on the results, we excluded participants

who had ever smoked or who had a BMI of less than 18.5 or more than 40. We also excluded participants who had diabetes at baseline, and we suspended updating of dietary variables after a diagnosis of diabetes during study follow-up. To assess the influence of total sodium intake, adherence to a Mediterranean diet (as assessed by the Mediterranean-diet score³⁴), and olive-oil intake on the results, we conducted separate analyses with adjustment for each of these variables. Finally, we conducted an analysis in which updating of dietary variables was continued even after a participant reported a diagnosis of a major chronic disease.

To address the concern that occult chronic diseases in the years that preceded diagnosis may have influenced dietary patterns, in the analysis in which we continuously updated dietary information after diagnosis of chronic disease, we excluded the first 2 years of follow-up data and added a 2-year lag period between nut-intake assessment and each follow-up period (e.g., in the NHS, we used nut intake from the 1980 questionnaire for the follow-up period from 1982 to 1984, and so forth).

To address the possibility of residual confounding by measured variables, we further adjusted for a propensity score that reflected associations of nut consumption with the other variables in the multivariate-adjusted model.³⁵ In addition, to estimate the influence of unmeasured confounding on the results, we used the array-approach sensitivity analysis described by Schneeweiss³⁶ in order to determine how strong and imbalanced the confounder would need to be to reduce an association to nonsignificance. We performed separate secondary analyses for peanuts and tree nuts, as well as analyses stratified by other risk factors. For these analyses, we combined categories of high nut intake to maintain statistical power. The likelihood-ratio test was used to test for interaction.

The hazard ratios from multivariate models in each cohort were pooled with the use of the random-effects model, which allowed for between-study heterogeneity. P values for heterogeneity were calculated with the use of the Q statistic. Analyses were performed with the SAS statistical package (version 9.1, SAS Institute). Statistical tests were two-sided, and P values of less than 0.05 were considered to indicate statistical significance.

RESULTS

NUT CONSUMPTION AND DIETARY AND LIFESTYLE FACTORS

During the study follow-up period, nut consumption remained relatively constant (Table S2 in the Supplementary Appendix). As compared with participants who consumed nuts less frequently, those who consumed nuts more frequently were leaner, less likely to smoke, more likely to exercise, and more likely to use multivitamin supplements; they also consumed more fruits and vegetables and drank more alcohol (Table 1, and Table S3 in the Supplementary Appendix).

NUT CONSUMPTION AND TOTAL MORTALITY

During 30 years of follow-up (2,135,482 person-years) among women in the NHS, we documented 16,200 deaths; during 24 years of follow-up (903,371 person-years) among men in the HPFS, we documented 11,229 deaths. Age-adjusted and multivariate-adjusted analyses showed a significant inverse association between frequency of nut consumption and total mortality among both women and men (Table 2). P values for heterogeneity between women and men were greater than

0.05 for all categories of nut consumption; therefore, we pooled results from these independent cohort studies. The pooled multivariate hazard ratios for death for participants who ate nuts, as compared with those who did not eat nuts, were 0.93 (95% confidence interval [CI], 0.90 to 0.96) for nut consumption less than once per week, 0.89 (95% CI, 0.86 to 0.93) for once per week, 0.87 (95% CI, 0.83 to 0.90) for two to four times per week, 0.85 (95% CI, 0.79 to 0.91) for five or six times per week, and 0.80 (95% CI, 0.73 to 0.86) for seven or more times per week ($P < 0.001$ for trend). The restricted cubic splines showed a pattern similar to the categorical analysis, and similar patterns were observed among women and men (Fig. S1 in the Supplementary Appendix).

NUT CONSUMPTION AND CAUSE-SPECIFIC MORTALITY

In multivariate analyses, nut consumption was inversely associated with the risk of most major causes of death among both women and men (Fig. 1, and Table S4 in the Supplementary Appendix). In the pooled analysis of women and men, significant inverse associations were observed for deaths due to cancer, heart disease, and respiratory disease (Table 3).

Table 1. Characteristics of Person-Years According to Frequency of Nut Consumption.*

Characteristic	Frequency of Nut Consumption					
	Never	Less Than Once per Week	Once per Week	Two to Four Times per Week	Five or Six Times per Week	Seven or More Times per Week
Age (yr)	57.5±11.4	60.1±10.9	60.8±10.9	62.0±10.8	62.7±11.1	61.8±11.5
Body-mass index	26.0±5.1	26.1±5.0	25.9±4.6	25.6±4.4	25.2±4.2	24.9±4.1
Physical activity (metabolic equivalents/wk)	19.2±28.9	20.4±27.5	25.2±32.5	28.5±34.9	31.3±38.4	34.3±42.3
Current smoker (%)	17.3	13.6	10.8	9.9	9.9	9.8
Underwent physical examination for screening purposes (%)	51.1	60.6	60.3	61.2	57.7	54.7
Currently uses multivitamins (%)	41.9	48.9	51.3	54.3	55.2	52.9
Alcohol intake (g/day)	6.0±11.1	6.4±10.9	8.2±12.4	9.5±13.5	11.0±15.2	11.3±15.6
Red or processed meat intake (servings/day)	1.3±0.9	1.4±0.8	1.4±0.9	1.3±0.9	1.3±0.9	1.2±1.0
Fruit intake (servings/day)	2.1±1.4	2.1±1.2	2.3±1.3	2.5±1.4	2.8±1.6	2.9±1.7
Vegetable intake (servings/day)	2.4±1.4	2.6±1.3	2.9±1.4	3.2±1.5	3.4±1.6	3.4±1.8

* Plus-minus values are means ±SD. All variables except age are age-standardized. Separate results for women and men are shown in Table S3 in the Supplementary Appendix. Frequency of nut consumption pertains to one serving of nuts, defined as 28 g.

Table 2. Total Mortality, According to Frequency of Nut Consumption.*

Variable	Frequency of Nut Consumption						P Value for Trend
	Never	Less Than Once per Week	Once per Week	Two to Four Times per Week	Five or Six Times per Week	Seven or More Times per Week	
Women							
No. of person-years	390,915	973,667	384,892	311,509	44,677	29,822	
No. of deaths	3343	7486	2663	2169	337	202	
Age-adjusted hazard ratio (95% CI)	1.00	0.69 (0.66–0.71)	0.59 (0.56–0.62)	0.54 (0.51–0.57)	0.60 (0.53–0.67)	0.67 (0.58–0.77)	<0.001
Multivariate-adjusted hazard ratio (95% CI)	1.00	0.94 (0.90–0.98)	0.88 (0.83–0.92)	0.85 (0.80–0.90)	0.88 (0.78–0.98)	0.79 (0.68–0.91)	<0.001
Men							
No. of person-years	130,848	228,338	217,025	237,617	49,416	40,127	
No. of deaths	1860	2801	2518	2843	671	536	
Age-adjusted hazard ratio (95% CI)	1.00	0.74 (0.70–0.79)	0.76 (0.71–0.80)	0.69 (0.65–0.73)	0.69 (0.63–0.76)	0.67 (0.61–0.74)	<0.001
Multivariate-adjusted hazard ratio (95% CI)	1.00	0.91 (0.85–0.96)	0.91 (0.86–0.97)	0.89 (0.83–0.94)	0.83 (0.76–0.91)	0.80 (0.73–0.88)	<0.001
Pooled†							
Multivariate-adjusted hazard ratio (95% CI)	1.00	0.93 (0.90–0.96)	0.89 (0.86–0.93)	0.87 (0.83–0.90)	0.85 (0.79–0.91)	0.80 (0.73–0.86)	<0.001

* Multivariate analyses were adjusted for age; race; body-mass index; level of physical activity; status with regard to smoking, whether a physical examination was performed for screening purposes, current multivitamin use, and current aspirin use; status with regard to a family history of diabetes mellitus, myocardial infarction, or cancer; status with regard to a history of diabetes mellitus, hypertension, or hypercholesterolemia; intake of total energy, alcohol, red or processed meat, fruits, and vegetables; and, in women, menopausal status and hormone use. For further details of these variables, see Figure S1 in the Supplementary Appendix. Frequency of nut consumption pertains to one serving of nuts, defined as 28 g.

† Results from the multivariate model were combined with the use of the random-effects model. $P > 0.05$ for heterogeneity between women and men in all categories of nut consumption.

SENSITIVITY ANALYSES

The significant inverse association between nut consumption and total mortality remained largely unchanged when we excluded participants who had ever smoked or who had an extremely high or low BMI; when we excluded participants with diabetes at baseline and suspended updating of dietary variables after a diagnosis of diabetes; when we adjusted for total sodium intake, Mediterranean-diet score, olive-oil intake, and a propensity score that predicted nut intake levels; when we continued to update dietary information after diagnosis of a chronic disease; and when we excluded the first 2 years of follow-up and added a 2-year lag period between nut-intake assessment and each follow-up period (Table S5 in the Supplementary Appendix). Furthermore, the array-approach sensitivity analysis³⁶ showed

that an unmeasured confounder would have to be strongly associated with mortality (e.g., predicted relative risk, ≤ 0.60) or substantially imbalanced between participants who ate nuts and those who did not (e.g., $\geq 40\%$ difference in prevalence between those who eat nuts seven or more times per week vs. never) in order to attenuate the inverse association sufficiently so that it that was no longer significant (Tables S6 and S7 in the Supplementary Appendix).

SUBGROUP ANALYSES

In separate analyses of the consumption of peanuts and tree nuts, the associations with total and cause-specific mortality were similar for the two types of nuts (Fig. 1, and Table S8 in the Supplementary Appendix). When consumption of nuts two or more times per week was compared

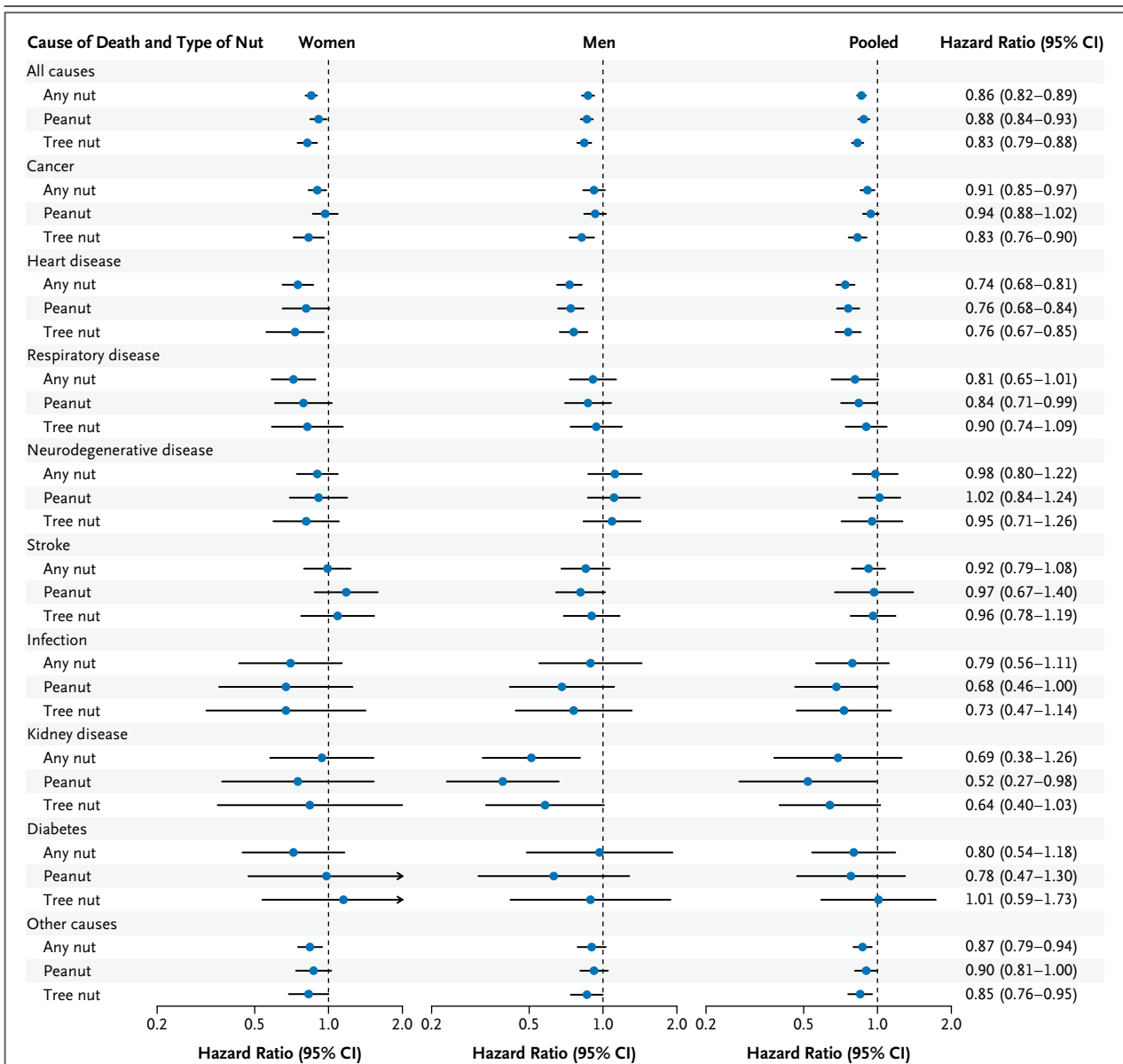


Figure 1. Hazard Ratios for Death from Any Cause and from Specific Causes, According to Frequency of Nut Consumption and Type of Nut.

Multivariate hazard ratios for death among study participants who consumed nuts two or more times per week versus those who never consumed nuts were adjusted for age; race; body-mass index; level of physical activity; status with regard to smoking, whether a physical examination was performed for screening purposes, current multivitamin use, and current aspirin use; status with regard to a family history of diabetes mellitus, myocardial infarction, or cancer; status with regard to a history of diabetes mellitus, hypertension, or hypercholesterolemia; intake of total energy, alcohol, red or processed meat, fruits, and vegetables; and, for women, menopausal status and hormone use. For further details of these variables, see Figure S1 in the Supplementary Appendix. Results were pooled with the use of the random-effects model. $P > 0.05$ for heterogeneity between women and men in all categories of nut consumption. The risk estimates for other categories of nut consumption are shown in Table S8 in the Supplementary Appendix. Horizontal lines represent 95% confidence intervals.

with no nut consumption, the pooled multivariate-adjusted hazard ratios for death were 0.88 (95% CI, 0.84 to 0.93) for peanuts and 0.83 (95% CI, 0.79 to 0.88) for tree nuts.

In analyses stratified by other potential risk factors for death, the inverse association between nut consumption and total mortality persisted in all subgroups (Fig. 2, and Table S9 in

Table 3. Cause-Specific Mortality, According to Frequency of Nut Consumption.*

Cause of Death	Frequency of Nut Consumption					P Value for Trend
	Never (N=521,763)	Less Than Once per Week (N=1,202,005)	Once per Week (N=601,917)	Two to Four Times per Week (N=549,126)	Five or More Times per Week (N=164,042)	
All causes						
No. of deaths	5203	10,287	5181	5012	1746	
Multivariate-adjusted hazard ratio (95% CI)	1.00	0.93 (0.90–0.96)	0.89 (0.86–0.93)	0.87 (0.83–0.90)	0.83 (0.78–0.88)	<0.001
Cancer						
No. of deaths	1883	3904	1976	1898	632	
Multivariate-adjusted hazard ratio (95% CI)	1.00	0.93 (0.88–0.98)	0.93 (0.87–1.00)	0.92 (0.85–0.98)	0.89 (0.81–0.99)	0.03
Cardiovascular disease						
No. of deaths	1355	2219	1224	1216	457	
Multivariate-adjusted hazard ratio (95% CI)	1.00	0.84 (0.78–0.90)	0.83 (0.76–0.89)	0.79 (0.73–0.86)	0.75 (0.62–0.84)	<0.001
Heart disease						
No. of deaths	1044	1693	914	907	348	
Multivariate-adjusted hazard ratio (95% CI)	1.00	0.84 (0.77–0.91)	0.78 (0.71–0.86)	0.75 (0.68–0.82)	0.71 (0.63–0.81)	<0.001
Stroke						
No. of deaths	311	526	310	309	109	
Multivariate-adjusted hazard ratio (95% CI)	1.00	0.82 (0.70–0.97)	0.94 (0.79–1.10)	0.93 (0.79–1.10)	0.89 (0.67–1.19)	0.91
Respiratory disease						
No. of deaths	376	769	379	355	122	
Multivariate-adjusted hazard ratio (95% CI)	1.00	0.95 (0.84–1.08)	0.91 (0.78–1.06)	0.83 (0.66–1.04)	0.76 (0.59–0.98)	0.005
Neurodegenerative disease						
No. of deaths	327	788	380	344	130	
Multivariate-adjusted hazard ratio (95% CI)	1.00	1.11 (0.97–1.26)	1.09 (0.94–1.27)	1.00 (0.76–1.32)	0.98 (0.79–1.22)	0.12
Infection						
No. of deaths	69	163	73	68	24	
Multivariate-adjusted hazard ratio (95% CI)	1.00	1.07 (0.80–1.43)	0.86 (0.61–1.21)	0.80 (0.56–1.15)	0.77 (0.46–1.28)	0.06
Kidney disease						
No. of deaths	80	138	73	56	20	
Multivariate-adjusted hazard ratio (95% CI)	1.00	0.89 (0.67–1.18)	0.87 (0.62–1.21)	0.70 (0.38–1.28)	0.61 (0.34–1.08)	0.19
Diabetes						
No. of deaths	79	129	39	42	15	
Multivariate-adjusted hazard ratio (95% CI)	1.00	0.95 (0.67–1.33)	0.70 (0.47–1.06)	0.79 (0.52–1.22)	0.84 (0.45–1.57)	0.29
Other causes						
No. of deaths	1034	2177	1037	1033	346	
Multivariate-adjusted hazard ratio (95% CI)	1.00	0.96 (0.89–1.03)	0.87 (0.79–0.95)	0.88 (0.81–0.97)	0.82 (0.72–0.94)	0.08

* Multivariate analyses were adjusted for age; race; body-mass index; level of physical activity; status with regard to smoking, whether a physical examination was performed for screening purposes, current multivitamin use, and current aspirin use; status with regard to a family history of diabetes mellitus, myocardial infarction, or cancer; status with regard to a history of diabetes mellitus, hypertension, or hypercholesterolemia; intake of total energy, alcohol, red or processed meat, fruits, and vegetables; and, in women, menopausal status and hormone use. For further details of these variables, see Figure S1 in the Supplementary Appendix. Results in women and men were combined with the use of the random-effects model. $P > 0.05$ for heterogeneity between women and men in all categories of nut consumption. Separate results in women and men are shown in Table S4 in the Supplementary Appendix. Frequency of nut consumption pertains to one serving of nuts, defined as 28 g. The categories of five times per week and seven or more times per week were combined to maintain statistical power. N denotes number of person-years.

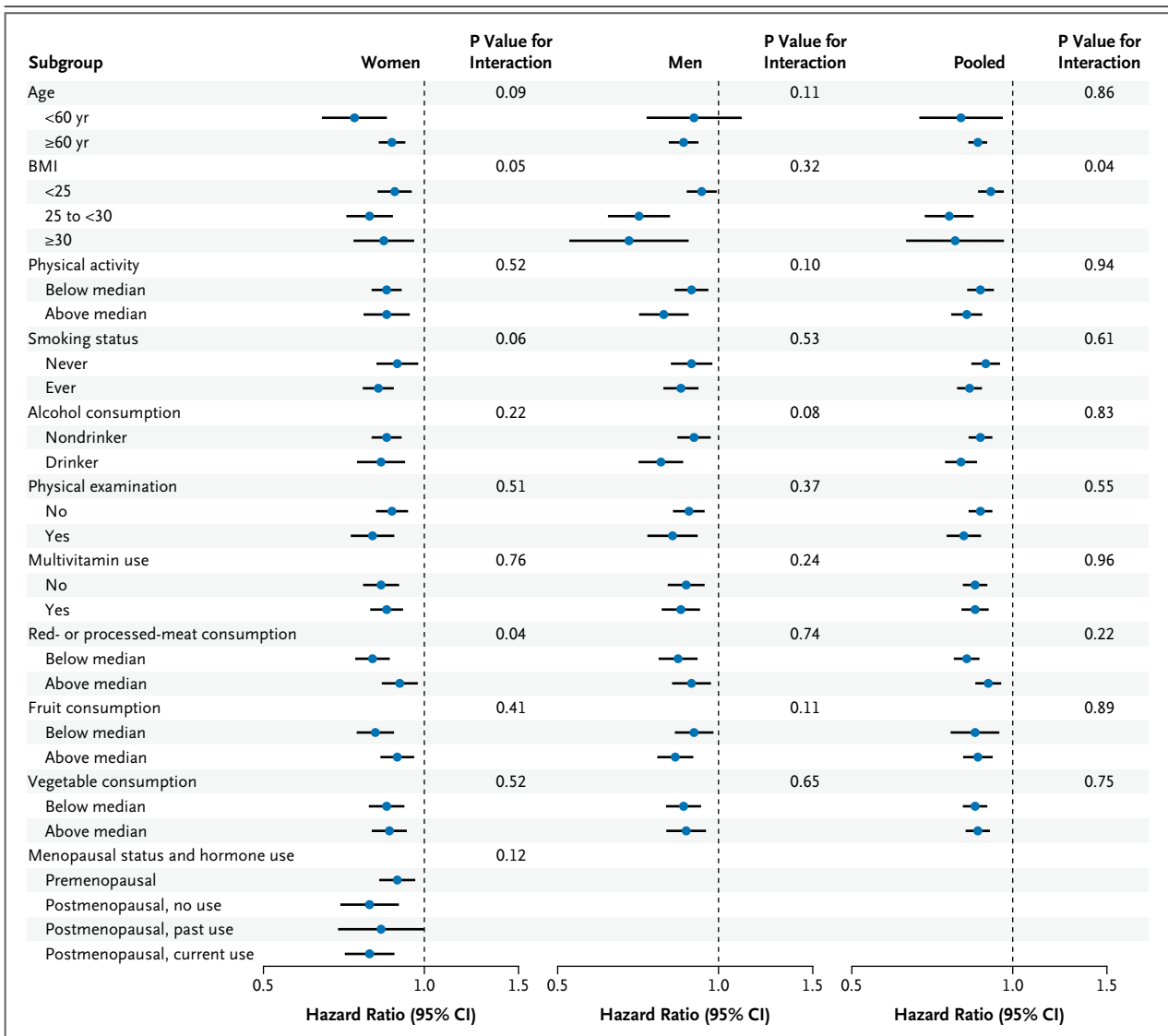


Figure 2. Hazard Ratios for Death from Any Cause in Subgroups.

Multivariate hazard ratios for death from any cause among study participants who consumed nuts two or more times per week versus those who never consumed nuts were adjusted for age; race; body-mass index; level of physical activity; status with regard to smoking, whether a physical examination was performed for screening purposes, current multivitamin use, and current aspirin use; status with regard to a family history of diabetes mellitus, myocardial infarction, or cancer; status with regard to a history of diabetes mellitus, hypertension, or hypercholesterolemia; intake of total energy, alcohol, red or processed meat, fruits, and vegetables; and, for women, menopausal status and hormone use. For further details of these variables, see Figure S1 in the Supplementary Appendix. Results were pooled with the use of the random-effects model. $P > 0.05$ for heterogeneity between women and men in all categories of nut consumption. The risk estimates for other categories of nut consumption are shown in Table S9 in the Supplementary Appendix. Horizontal lines represent 95% confidence intervals.

the Supplementary Appendix). Although a significant inverse association was observed across all strata of BMI, the association was stronger among overweight or obese participants than among normal-weight participants ($P=0.04$ for interaction).

DISCUSSION

In two large prospective U.S. cohorts, we found a significant, dose-dependent inverse association between nut consumption and total mortality, after adjusting for potential confounders. As

compared with participants who did not eat nuts, those who consumed nuts seven or more times per week had a 20% lower death rate. Inverse associations were observed for most major causes of death, including heart disease, cancer, and respiratory diseases. Results were similar for peanuts and tree nuts, and the inverse association persisted across all subgroups.

Our results are consistent with the findings in previous, smaller studies. The Adventist Health Study showed that, as compared with nut consumption less than once per week, consumption five or more times per week was associated with reduced total mortality among whites,²⁴ blacks,²⁵ and elderly persons,²⁶ with hazard ratios ranging from 0.56 to 0.82. Similarly, a study of a U.K. cohort,²⁷ the Iowa Women's Health Study,²⁸ the Netherlands Cohort Study,³⁰ and an earlier analysis of the NHS²⁹ all showed significant inverse associations between nut intake and total mortality. Finally, in a recent secondary analysis within the PREDIMED (Prevención con Dieta Mediterránea) trial,³¹ a hazard ratio for death of 0.61 (95% CI, 0.45 to 0.83) was found for consumption of more than three servings of nuts per week, as compared with no nut consumption.

Several explanations for our findings are possible. The observed associations could reflect confounding by unmeasured or poorly measured variables. However, participants in both cohorts provided detailed and repeated measures of diet and lifestyle, which allowed us to carefully control for a variety of potential confounding factors. To further minimize confounding by measured variables, we used the propensity-score method to adjust for differences between comparison groups, and the results remained largely unchanged. In addition, the inverse association persisted across subgroups defined by the potential confounding factors, further suggesting an independent association. We cannot rule out the possibility of confounding by unknown factors; however, the array-approach sensitivity analysis³⁶ showed that a potential confounding effect would have to be quite large to meaningfully alter the observed associations in this study. In light of the large number of important confounding factors included in our analysis, all of which were updated regularly throughout study follow-up, it seems unlikely that such strong unmeasured confounding could fully explain the associations.

Reverse causality is another possible explanation for our findings, because people with chronic disease and poor health might abstain from nut consumption. However, we excluded participants with a history of cancer, heart disease, or stroke at baseline, and we suspended further updating of all dietary variables when participants reported a diagnosis of stroke, heart disease, angina, or cancer. Moreover, the results remained significant when we excluded the first 2 years of follow-up and added a 2-year lag period between nut-intake assessment and each follow-up period.

There may be a concern that frequent nut consumption can result in weight gain. However, in these two cohorts, increased nut intake was associated with less weight gain.³⁷ Similarly, in other prospective cohort studies and clinical trials, increased nut consumption was associated with reduced waist circumference,³⁸ less weight gain,^{39,40} and a decreased risk of obesity.⁴⁰

The strengths of this study include its prospective design, large sample, 30 years of follow-up with an excellent follow-up rate, and repeated assessment of diet and lifestyle variables. However, our study has limitations. Because nut intake was self-reported, some measurement error is inevitable. However, we were able to reduce random measurement error by averaging nut intake cumulatively from multiple time points. Moreover, because dietary data were collected prospectively, misreporting could be random, resulting in an underestimation of the association. Because we lacked data on how nuts were prepared (e.g., salted, spiced, roasted, or raw), we were unable to examine the influence of preparation method on mortality. Restriction of the study sample to health professionals could reduce the generalizability of the results, but it also potentially minimizes residual confounding by socioeconomic status. In addition, metabolic processes are unlikely to differ between health professionals and the general population.

Given the observational nature of our study, it is not possible to conclude that the observed inverse association between nut consumption and mortality reflects cause and effect. However, our data are consistent with a wealth of existing observational and clinical-trial data in supporting the health benefits of nut consumption for many chronic diseases.¹⁴⁻²³ In addition, nutrients in nuts, such as unsaturated fatty acids, high-

quality protein, fiber, vitamins (e.g., folate, niacin, and vitamin E), minerals (e.g., potassium, calcium, and magnesium), and phytochemicals (e.g., carotenoids, flavonoids, and phytosterols), may confer cardioprotective, anticarcinogenic, antiinflammatory, and antioxidant properties.^{1,2} Indeed, clinical trials have shown that nut consumption has beneficial effects on some intermediate markers of chronic diseases, such as high cholesterol levels,³ oxidation,^{6,7} endothelial dysfunction,¹³ hyperglycemia,^{6,10} and insulin resistance.^{11,12} Moreover, recent findings from the PREDIMED trial have shown a protective effect of a Mediterranean diet against cardiovascular disease, and one component of the diet was the availability of an average of 30 g of nuts per day.⁵

In conclusion, our analysis of samples from these two prospective cohort studies showed significant inverse associations of nut consumption with total and cause-specific mortality. Nonetheless, epidemiologic observations establish associations, not causality, and not all findings from observational studies have been confirmed in controlled, randomized clinical trials.

Supported by grants from the National Institutes of Health (UM1 CA167552, P01 CA055075, P01 CA87969, R01 HL60712, R01 CA124908, P50 CA127003, and 1U54 CA155626-01) and the International Tree Nut Council Nutrition Research and Education Foundation.

Disclosure forms provided by the authors are available with the full text of this article at NEJM.org.

We thank the participants and staff of the Nurses' Health Study and the Health Professionals Follow-up Study for their valuable contributions.

REFERENCES

- Kris-Etherton PM, Hu FB, Ros E, Sabaté J. The role of tree nuts and peanuts in the prevention of coronary heart disease: multiple potential mechanisms. *J Nutr* 2008;138:1746S-1751S.
- González CA, Salas-Salvadó J. The potential of nuts in the prevention of cancer. *Br J Nutr* 2006;96:Suppl 2:S87-S94. [Erratum, *Br J Nutr* 2008;99:447-8.]
- Sabaté J, Oda K, Ros E. Nut consumption and blood lipid levels: a pooled analysis of 25 intervention trials. *Arch Intern Med* 2010;170:821-7.
- Qualified health claims: letter of enforcement discretion — nuts and coronary heart disease. Rockville, MD: Food and Drug Administration, July 14, 2003.
- Estruch R, Ros E, Salas-Salvadó J, et al. Primary prevention of cardiovascular disease with a Mediterranean diet. *N Engl J Med* 2013;368:1279-90.
- Jenkins DJ, Kendall CW, Josse AR, et al. Almonds decrease postprandial glycemia, insulinemia, and oxidative damage in healthy individuals. *J Nutr* 2006;136:2987-92.
- Torabian S, Haddad E, Rajaram S, Banta J, Sabaté J. Acute effect of nut consumption on plasma total polyphenols, antioxidant capacity and lipid peroxidation. *J Hum Nutr Diet* 2009;22:64-71.
- Jiang R, Jacobs DR Jr, Mayer-Davis E, et al. Nut and seed consumption and inflammatory markers in the Multi-Ethnic Study of Atherosclerosis. *Am J Epidemiol* 2006;163:222-31.
- O'Neil CE, Keast DR, Nicklas TA, Fulgoni VL III. Nut consumption is associated with decreased health risk factors for cardiovascular disease and metabolic syndrome in U.S. adults: NHANES 1999-2004. *J Am Coll Nutr* 2011;30:502-10.
- Jenkins DJ, Kendall CW, Banach MS, et al. Nuts as a replacement for carbohydrates in the diabetic diet. *Diabetes Care* 2011;34:1706-11.
- Casas-Agustench P, López-Uriarte P, Bulló M, Ros E, Cabré-Vila JJ, Salas-Salvadó J. Effects of one serving of mixed nuts on serum lipids, insulin resistance and inflammatory markers in patients with the metabolic syndrome. *Nutr Metab Cardiovasc Dis* 2011;21:126-35.
- Tapsell LC, Batterham MJ, Teuss G, et al. Long-term effects of increased dietary polyunsaturated fat from walnuts on metabolic parameters in type II diabetes. *Eur J Clin Nutr* 2009;63:1008-15.
- Ma Y, Njike VY, Millet J, et al. Effects of walnut consumption on endothelial function in type 2 diabetic subjects: a randomized controlled crossover trial. *Diabetes Care* 2010;33:227-32.
- Jiang R, Manson JE, Stampfer MJ, Liu S, Willett WC, Hu FB. Nut and peanut butter consumption and risk of type 2 diabetes in women. *JAMA* 2002;288:2554-60.
- Villegas R, Gao YT, Yang G, et al. Legume and soy food intake and the incidence of type 2 diabetes in the Shanghai Women's Health Study. *Am J Clin Nutr* 2008;87:162-7.
- Pan A, Sun Q, Manson JE, Willett WC, Hu FB. Walnut consumption is associated with lower risk of type 2 diabetes in women. *J Nutr* 2013;143:512-8.
- Fernández-Montero A, Bes-Rastrollo M, Beunza JJ, et al. Nut consumption and incidence of metabolic syndrome after 6-year follow-up: the SUN (Seguimiento Universidad de Navarra, University of Navarra Follow-up) cohort. *Public Health Nutr* 2013;16:2064-72.
- Singh PN, Fraser GE. Dietary risk factors for colon cancer in a low-risk population. *Am J Epidemiol* 1998;148:761-74.
- Djoussé L, Rudich T, Gaziano JM. Nut consumption and risk of hypertension in US male physicians. *Clin Nutr* 2009;28:10-4.
- Tsai CJ, Leitzmann MF, Hu FB, Willett WC, Giovannucci EL. A prospective cohort study of nut consumption and the risk of gallstone disease in men. *Am J Epidemiol* 2004;160:961-8.
- Idem*. Frequent nut consumption and decreased risk of cholecystectomy in women. *Am J Clin Nutr* 2004;80:76-81.
- Strate LL, Liu YL, Syngal S, Aldoori WH, Giovannucci EL. Nut, corn, and popcorn consumption and the incidence of diverticular disease. *JAMA* 2008;300:907-14.
- Gopinath B, Buyken AE, Flood VM, Empson M, Rochtchina E, Mitchell P. Consumption of polyunsaturated fatty acids, fish, and nuts and risk of inflammatory disease mortality. *Am J Clin Nutr* 2011;93:1073-9.
- Goldstein MR, Fraser GE, Sabate J, Beeson WL. Nuts, nuts good for your heart...? *Arch Intern Med* 1992;152:2507, 2511.
- Fraser GE, Sumburu D, Pribis P, Neil RL, Frankson MA. Association among health habits, risk factors, and all-cause mortality in a black California population. *Epidemiology* 1997;8:168-74.
- Fraser GE, Shavlik DJ. Risk factors for all-cause and coronary heart disease mortality in the oldest-old: the Adventist Health Study. *Arch Intern Med* 1997;157:2249-58.
- Mann JJ, Appleby PN, Key TJ, Thorgeod M. Dietary determinants of ischaemic heart disease in health conscious individuals. *Heart* 1997;78:450-5.
- Ellsworth JL, Kushi LH, Folsom AR. Frequent nut intake and risk of death from coronary heart disease and all causes in postmenopausal women: the Iowa Women's Health Study. *Nutr Metab Cardiovasc Dis* 2001;11:372-7.
- Baer HJ, Glynn RJ, Hu FB, et al. Risk factors for mortality in the Nurses' Health Study: a competing risks analysis. *Am J Epidemiol* 2011;173:319-29.
- van den Brandt PA. The impact of a

- Mediterranean diet and healthy lifestyle on premature mortality in men and women. *Am J Clin Nutr* 2011;94:913-20.
31. Guasch-Ferré M, Bulló M, Martínez-González MA, et al. Frequency of nut consumption and mortality risk in the PREDIMED nutrition intervention trial. *BMC Med* 2013;11:164.
32. Salvini S, Hunter DJ, Sampson L, et al. Food-based validation of a dietary questionnaire: the effects of week-to-week variation in food consumption. *Int J Epidemiol* 1989;18:858-67.
33. Rich-Edwards JW, Corsano KA, Stampfer MJ. Test of the National Death Index and Equifax Nationwide Death Search. *Am J Epidemiol* 1994;140:1016-9.
34. Trichopoulou A, Costacou T, Bamia C, Trichopoulos D. Adherence to a Mediterranean diet and survival in a Greek population. *N Engl J Med* 2003;348:2599-608.
35. D'Agostino RB Jr. Propensity score methods for bias reduction in the comparison of a treatment to a non-randomized control group. *Stat Med* 1998;17:2265-81.
36. Schneeweiss S. Sensitivity analysis and external adjustment for unmeasured confounders in epidemiologic database studies of therapeutics. *Pharmacoepidemiol Drug Saf* 2006;15:291-303.
37. Mozaffarian D, Hao T, Rimm EB, Willett WC, Hu FB. Changes in diet and lifestyle and long-term weight gain in women and men. *N Engl J Med* 2011;364:2392-404.
38. Salas-Salvadó J, Fernández-Ballart J, Ros E, et al. Effect of a Mediterranean diet supplemented with nuts on metabolic syndrome status: one-year results of the PREDIMED randomized trial. *Arch Intern Med* 2008;168:2449-58.
39. Bes-Rastrollo M, Sabaté J, Gómez-Gracia E, Alonso A, Martínez JA, Martínez-González MA. Nut consumption and weight gain in a Mediterranean cohort: the SUN study. *Obesity (Silver Spring)* 2007;15:107-16.
40. Bes-Rastrollo M, Wedick NM, Martínez-González MA, Li TY, Sampson L, Hu FB. Prospective study of nut consumption, long-term weight change, and obesity risk in women. *Am J Clin Nutr* 2009;89:1913-9.

Copyright © 2013 Massachusetts Medical Society.